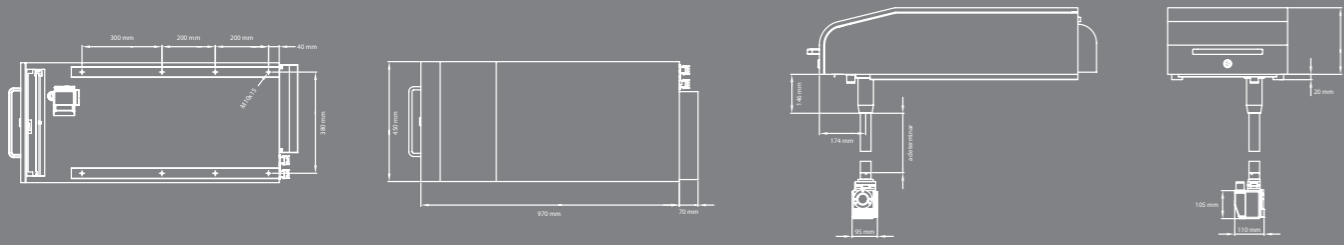


SERIE KIP-1070 SHS PLUS

CO₂ - AIR COOLING-IP



LASER MARKING & CODING SYSTEM

macsa

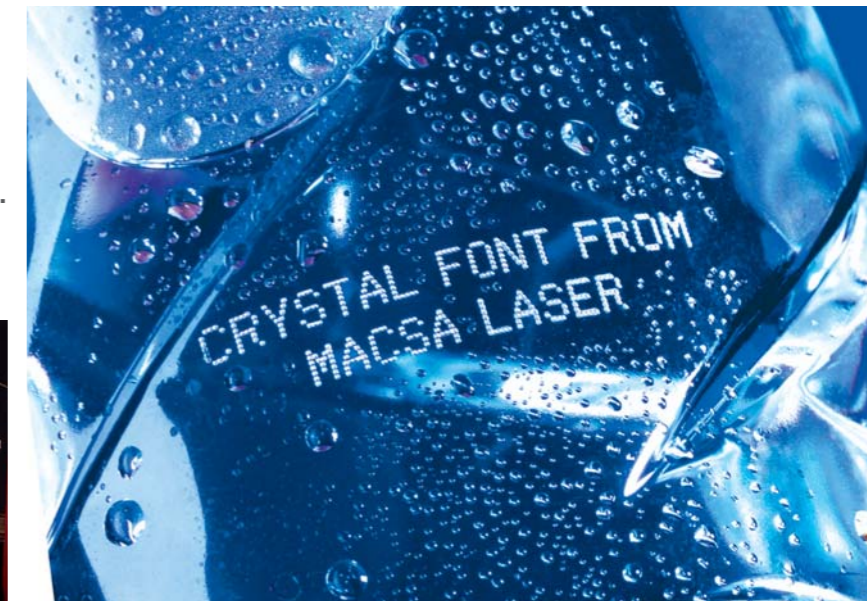
KIP-1070 SHS

LASER SYSTEM

MODEL	KIP-1070 SHS PLUS SPLIT						
NOMINAL POWER	70W						
MARKING HEAD	K-1000 - 10,6µm: CO ₂ sealed laser tube / R.F. technology / Wave length: 10.6 microns						
WAVE LENGTH	10,6 µ						
SYSTEM CABINET	Laser, electronic control, CPU, scanner drivers and power supply control built into the laser system. Scanner galvos in a separate scanning head.						
MAIN SUPPLY	125 V / 230 V 50 / 60 Hz (1 phase + N) 1760 VA						
FOCAL SPECIFICATIONS	Working Distance	Focal Distance	Marking Area				BEAM DIAM.
	85 mm	95 mm	60x60 mm				< 160 µm
	115 mm	125 mm	75x75 mm				< 220 µm
	190 mm	200 mm	100x100 mm				< 350 µm
	230 mm	240 mm	150x150 mm				< 420 µm
	310 mm	320 mm	200x200 mm				< 560 µm
	400 mm	410 mm	250x250 mm				< 720 µm
µm = microns / STD: Standard / OPT: Optional							
USER INTERFACE	· Hand Held Terminal / Touch Screen / Computer / PC						
CONTROL	· Touch Screen with ScanLinux software · PC with Full Graphics Interface: includes Marca™ software, protection key and Ethernet cable [TCP/IP] · PC with Marca Lite: includes Marca Lite™ software, protection key and Ethernet cable [TCP/IP]						
SOFTWARE	· ScanLinux V.4.2 and higher · Marca Software V5.5.4 and higher · Internal Bar Code · Marca Lite Software · 21 CFR Part 11 Software						
SPEED	PET BOTTLE	MAX LINE SPEED (m/min)		BOTTLES PER HOUR		SCANNERS SPEED PARAMETERS	
		Newpal font	Crystal font	Newpal font	Crystal font	Newpal font	Crystal font
	1 Line / 8 Char.	425	265	182000	113500	10000	75
	2 Line / 8 Char.	215	130	92100	55700	10000	75
	3 Line / 8 Char.	145	85	60000	36400	10000	75
	4 Line / 8 Char.	105	65	45000	27800	10000	75
	DATALASE						
	1 Line / 8 Char.	705	325	302100	139200	40000	30
	2 Line / 8 Char.	365	160	156400	68500	40000	30
	3 Line / 8 Char.	245	105	105000	45000	40000	30
	4 Line / 8 Char.	180	75	77100	32100	40000	30
	PAPER LABEL						
1 Line / 8 Char.	575	290	245000	124000	20000	65	
2 Line / 8 Char.	310	140	130000	60000	20000	65	
3 Line / 8 Char.	190	95	80000	40700	20000	65	
4 Line / 8 Char.	145	70	60000	30000	20000	65	
ACCESSORIES	· Diode marking area indicator · Encoder kit · Mounting support · Photocell kit						
ENVIRONMENTAL CONDITIONS	· 15° C (59° F) to 40° C (104° F) external temperature · Humidity < 95% non-condensing · No vibrations						
DIMENSIONS	Rack : 450mm x 250mm x 1020mm						
WEIGHT	Net weight: 80 Kg Gross weight: 95 Kg						



THE MACSA KIP-1070 SHS PLUS SERIES IS THE SOLUTION FOR MARKING YOUR PRODUCTS WITH INCREDIBLY CLEAR MESSAGES AT MINIMAL OPERATIONAL COSTS.



MACSA ID, SA
Girona, 46-48 · 08242 Manresa (Barcelona)
SPAIN · PO BOX 383
Tel: + 34 93 873 87 98 · Fax: + 34 93 874 11 56
macsa@macsa.es www.macsalaser.com

