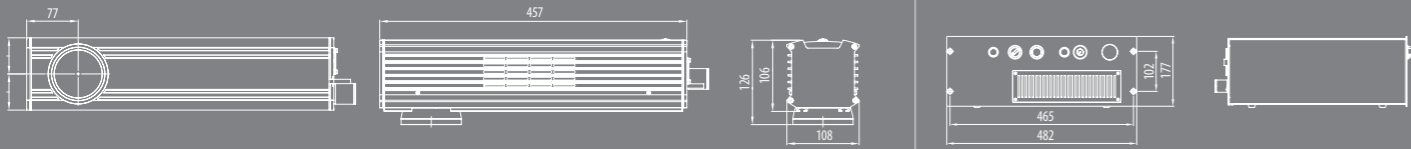


**SERIE F-9000** 10W/20W/50W - FIBRE - AIR COOLED- PULSED/FILM

**PULSED**



**FILM SHS**



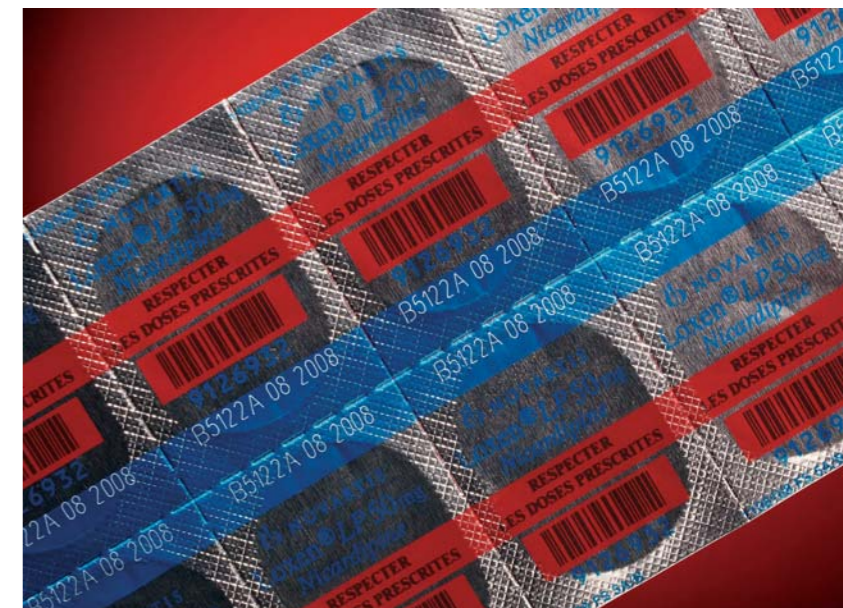
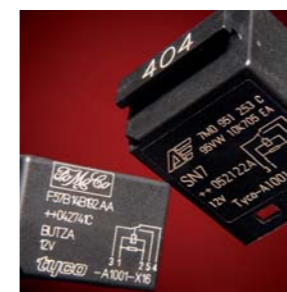
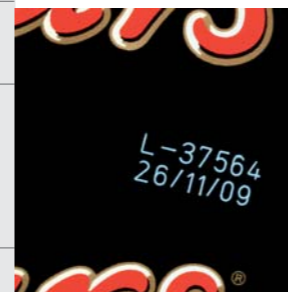
LASER MARKING & CODING SYSTEM  
**macsa**

**F-9000**  
LASER SYSTEM



THIS VERSATILE FIBRE LASER SYSTEM  
ALLOWS MARKING A WIDE RANGE OF  
MATERIALS, FROM FLEXIBLE FOIL AND  
PLASTICS TO METAL.

<b>MODEL</b>	F-9010 / F9020 / F9050 - PULSED		F-9010 FILM SHS / F-9020 FILM SHS / F-9050 FILM SHS		
<b>NOMINAL POWER</b>	10W - 20W - 50W (wavelength: 1.06 microns)		10W - 20W - 50W (wavelength: 1.07 microns)		
<b>MARKING HEAD</b>	Fibre Laser. Marking area indicator (red diode) 635nm optional. Marking optimized beam quality.		Fibre Laser. Marking area indicator (red diode) 635nm optional. Marking optimized beam quality.		
<b>SYSTEM CABINET</b>	Series F-9000 PULSED Laser, Scanners and Scanner boards built into the laser output head. Control electronics and power supplies built into the cabinet.		Series F-9000 FILM Laser and Scanners built into the laser output head. Control electronics, Scanner boards and power supplies built into the cabinet.		
<b>FOCAL SPECIFICATIONS</b>	Focal Distance	Working Distance	Marking Area	Beam Diameter	Options
	100mm	128mm	55x55mm (2.2x2.2 inch)	<50-80 microns	Optional
	162mm	205mm	100x100mm (4.0x4.0 inch)	<70-100 microns	Standard
	254mm	321mm	160x160mm (6.3x6.3 inch)	<100-150 microns	Optional
	346mm	427mm	200x200mm (7.9x7.9 inch)	<100-150 microns	Optional
<b>Q-SWITCH FREQUENCY</b>	F-9010 / F-9020 / F-9050: 20 to 80 KHz		F-9000 FILM: CW		
<b>CONTROL</b>	<ul style="list-style-type: none"> <li>Handheld Terminal with ScanLinux software</li> <li>Touch screen with Hand Held Terminal emulator software</li> <li>PC with Full Graphics Interface: includes Marca™ software, protection key and Ethernet cable (TCP/IP)</li> <li>PC with Network interface: includes Marca Lite™ software, protection key and Ethernet cable (TCP/IP)</li> </ul>				
<b>MAIN SUPPLY</b>	F-9010: 115 / 230V AC-50/60Hz 1Phase + N - 400VA F-9020: 115 / 230V AC-50/60Hz 1Phase + N - 500VA F-9050: 115 / 230V AC-50/60Hz 1Phase + N - 700VA		F-9010 FILM: 115 / 230V AC-50/60Hz 1Phase + N - 350VA F-9020 FILM: 115 / 230V AC-50/60Hz 1Phase + N - 450VA F-9050 FILM: 115 / 230V AC-50/60Hz 1Phase + N - 650VA		
<b>ACCESSORIES</b>	Mounting support Encoder and photocell kit		Mounting support Encoder and photocell kit		
<b>ENVIROMENTAL CONDITIONS</b>	F-9010: 5°C (41°F) to 40°C (104°F) external temperature. F-9020: 5°C (41°F) to 36°C (97°F) external temperature. F-9050: 0°C (32°F) to 35°C (95°F) external temperature. Suspension particles < 3mg/m3 10% < Humidity < 95% non-condensing No vibrations		F-9010: 5°C (41°F) to 40°C (104°F) external temperature. F-9020: 5°C (41°F) to 36°C (97°F) external temperature. F-9050: 0°C (32°F) to 35°C (95°F) external temperature. Suspension particles < 3mg/m3 5% < Humidity < 95% non-condensing No vibrations		
<b>WEIGHT</b>	F-9010 PULSED: Laser head 5Kg Cabinet 21Kg F-9020 PULSED: Laser head 5Kg Cabinet 21Kg F-9050 PULSED: Laser head 5Kg Cabinet 21Kg		F-9010 FILM: Laser head 3Kg Cabinet 20Kg F-9020 FILM: Laser head 3Kg Cabinet 20Kg F-9050 FILM: Laser head 3Kg Cabinet 20Kg		



MACSA ID, SA  
Girona, 46-48 - 08242 Manresa (Barcelona)  
SPAIN - PO BOX 383  
Tel: + 34 93 873 87 98 - Fax: + 34 93 874 11 56  
macsa@macsa.es www.macsalaser.com

